

Subject: Scheduled and Manual Backup to NAS on NS Series

Bulletin Type: ☐ Product ☐ Marketing ☒ Service

Bulletin Number: Unified Communications-2015-SB-34

Date: August 3, 2015

Product: KX-NS1000, KX-NS700

Setup Instructions with Screenshots for Scheduled and Manual Backup to a NAS on NS Series

1. Set up NAS device first. This example is using an external HDD plugged into USB port on a TP-LINK router that allows storage sharing.
 - A. Connect NAS to network. (In this example, a USB HDD was plugged into a router on the network). In this example the drive shows up under USB settings. Make sure that it is enabled. To make the connection more secure, a password was setup. (Figure 1)
 - B. Create a username that will have access to the NAS and give that user Read/Write permissions to the backup folder created in step A. (Figure 2)
 - C. Access the NAS using its UNC path [\\ipAddress\VolumeName](#) and configure a folder that you want the UM backup to save to. In this example, a folder called "NS1000_UMBackup" was created. (Figure 3)

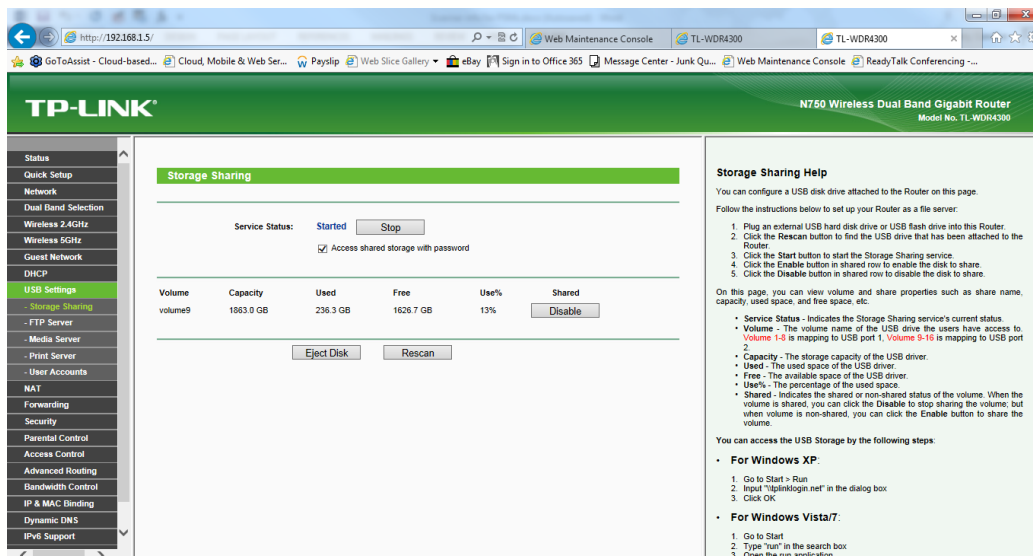


Figure 1



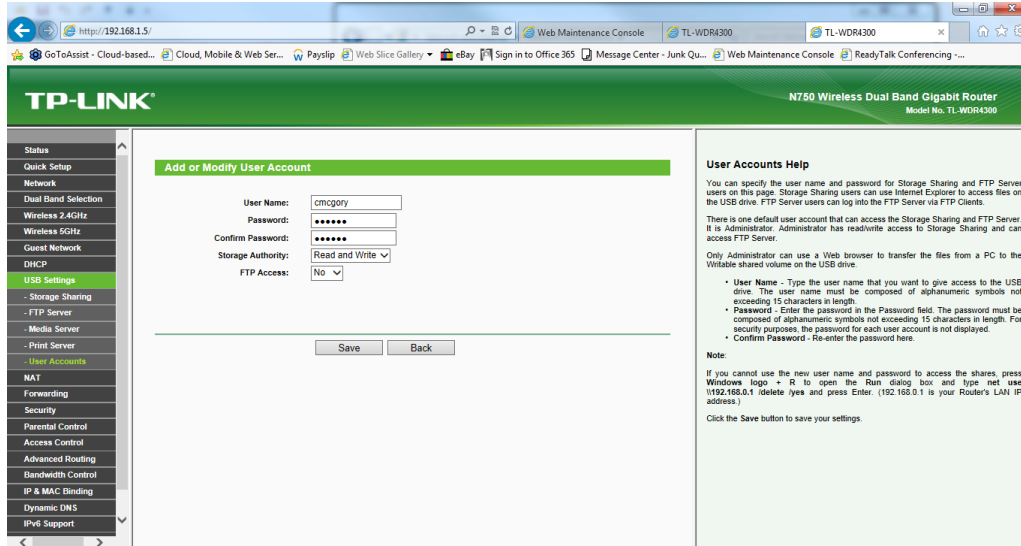


Figure 2

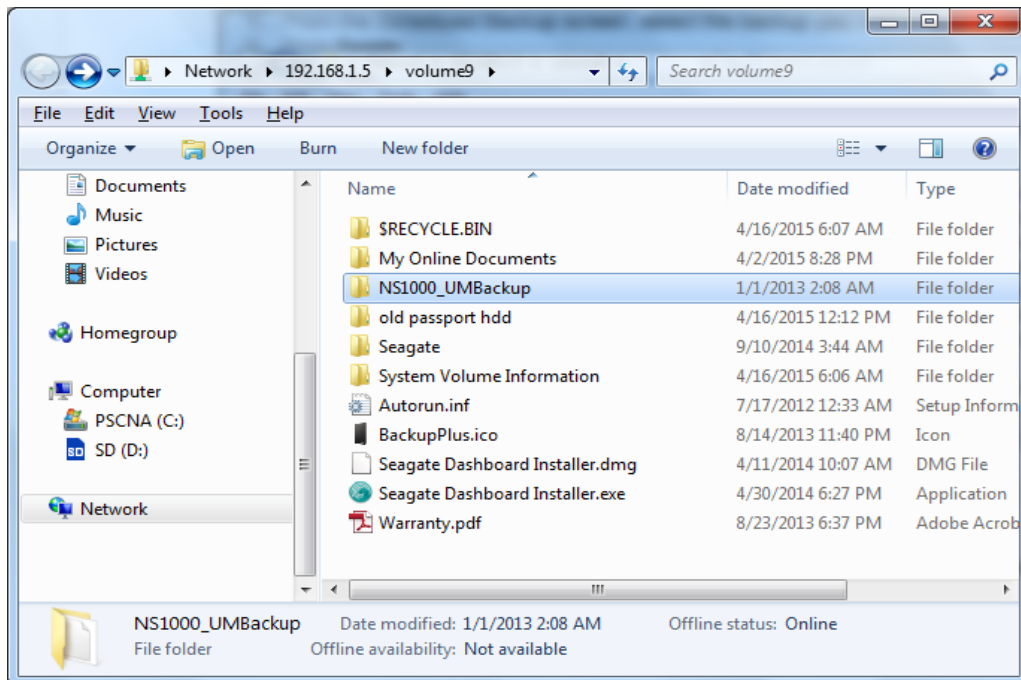


Figure 3 (backup folder created on NAS)



2. Connect the NS PBX to the NAS

- A. Browse into the NS and login
- B. Click on Setup (gear)
- C. Select, Network service, Other, NAS (Figure 4)
- D. Under NAS setting, select appropriate Protocol – this would depend on which protocol your NAS supports. Some NAS devices support both. In this example, CIFS was used. CIFS/SMB is windows protocol and NFS is Linux protocol.
- E. Next, enter the IP address or name of the NAS (recommend IP if DNS not configured on the NS)
- F. The port will be filled in automatically – 445 is default port for CIFS and 2049 is default for NFS.
- G. Enter the mount directory (this is the root directory of the NAS. In this example, it is volume9 – this was assigned automatically when the USB HDD was plugged into the 2nd USB port on router. (this router has 2 USB ports – port 1 is for volumes 1-8 and port2 is for volumes 9-16)
- H. Enter username and password that was created in step 1C. above.
- I. Lastly, click on Connect button at top of page. If all is correct, it will connect to the NAS and status will show “Connected”. (Figure 5)
- J. Click apply and OK.

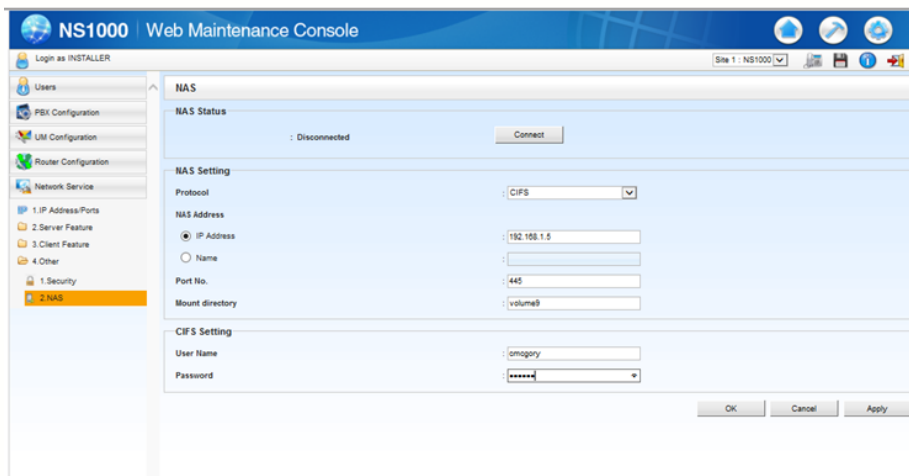


Figure 4



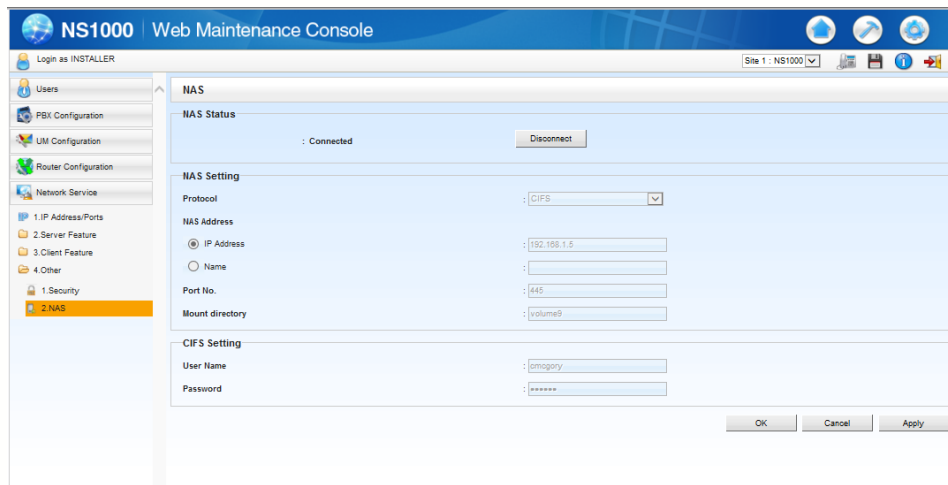
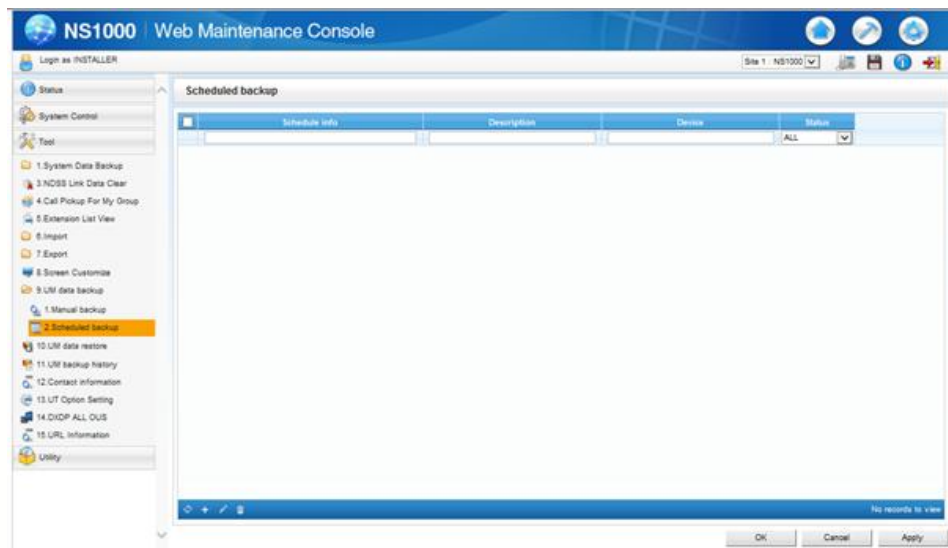


Figure 5

***For Manual backup – skip to step 4.

3. Setup scheduled backup (for more info, refer to section 6.8.2 (UM scheduled backup) in the NS programming manual)

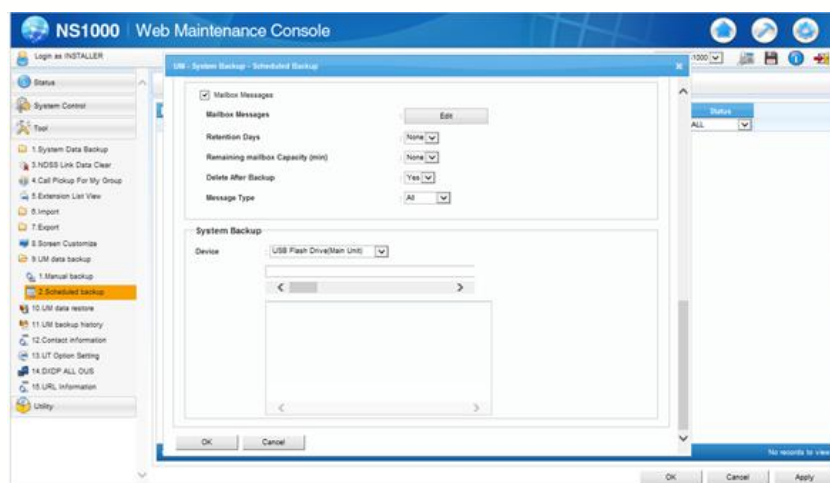
- A. Click on Maintenance (hammer)
- B. Select Tool/UM Data Backup/Scheduled Backup (9.2)
- C. In bottom left corner, click on the plus sign (+)



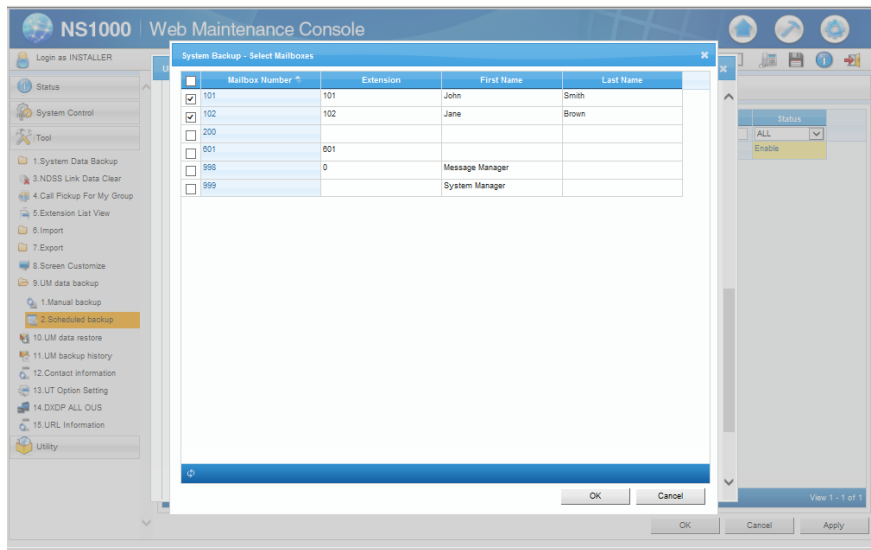
- D. You will get a pop-up saying to plug in flash drive – just click OK. (This pop-up appears because the default setting is for flash drive and if you do not have a flash drive plugged into the USB port on the NS, you will get this message. In this case, we are not going to back up to a flash drive, so just click OK to discard the message.)
- E. At the top of page, you can enter a description (name of backup)



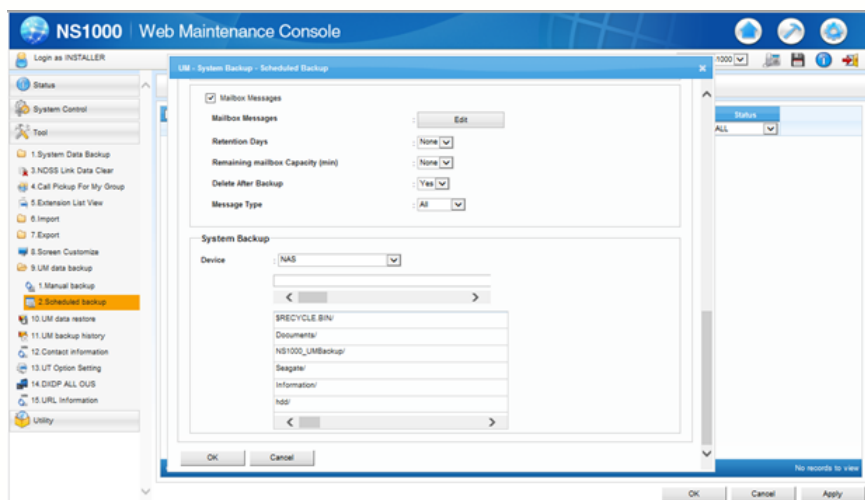
- F. Select desired time for backup and enter pertinent info
- G. Next, select what you want backed up. In this example, we are selecting to only backup UM mailbox messages. So scroll down the page and check box for mailbox messages.



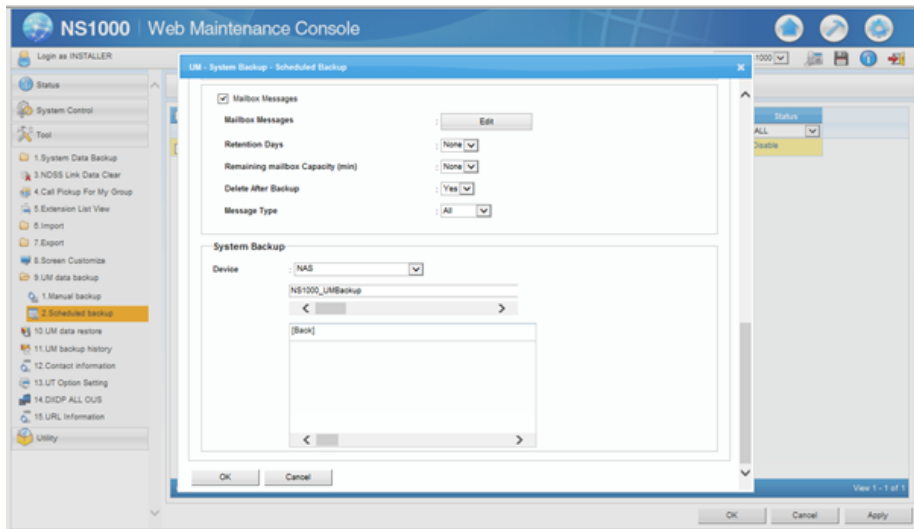
- H. Click on Edit next to mailbox messages and select which mailboxes you want to backup and click OK.



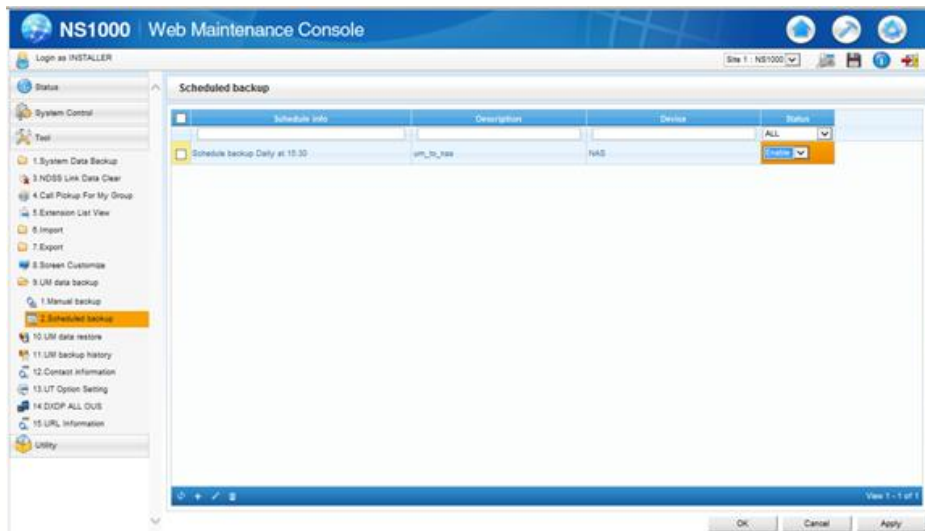
- I. Select retention time, remaining mailbox capacity and if you want messages deleted after backup.
- J. Under system backup, select NAS from the dropdown menu.
- K. If the NS connected to the NAS in step 2, then you will see a list of folders that are in the root folder of the NAS.



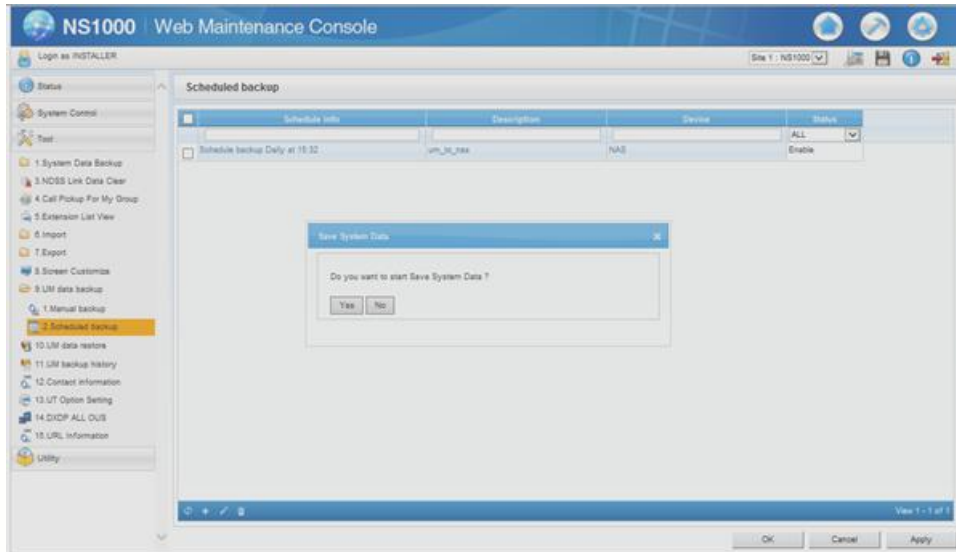
- L. Select folder that you setup on NAS as the backup folder – if you double-click it, then it should show up in the blank box underneath the dropdown where you selected NAS. This is the directory path to the folder.



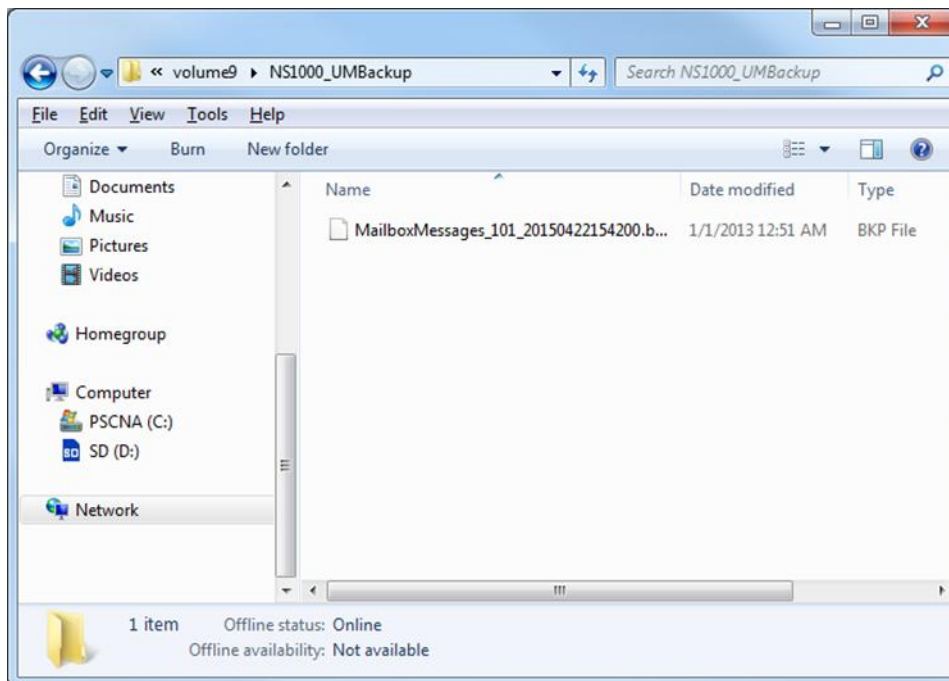
- M. Click OK
- N. On the scheduled backup page, you will now see the scheduled backup in list. At the far right under status, change setting to Enabled.



- O. Click Apply, then OK.
- P. It is recommended to save data by clicking on Save icon in upper right (under hammer)



Here is screenshot of messages saved in the NAS.

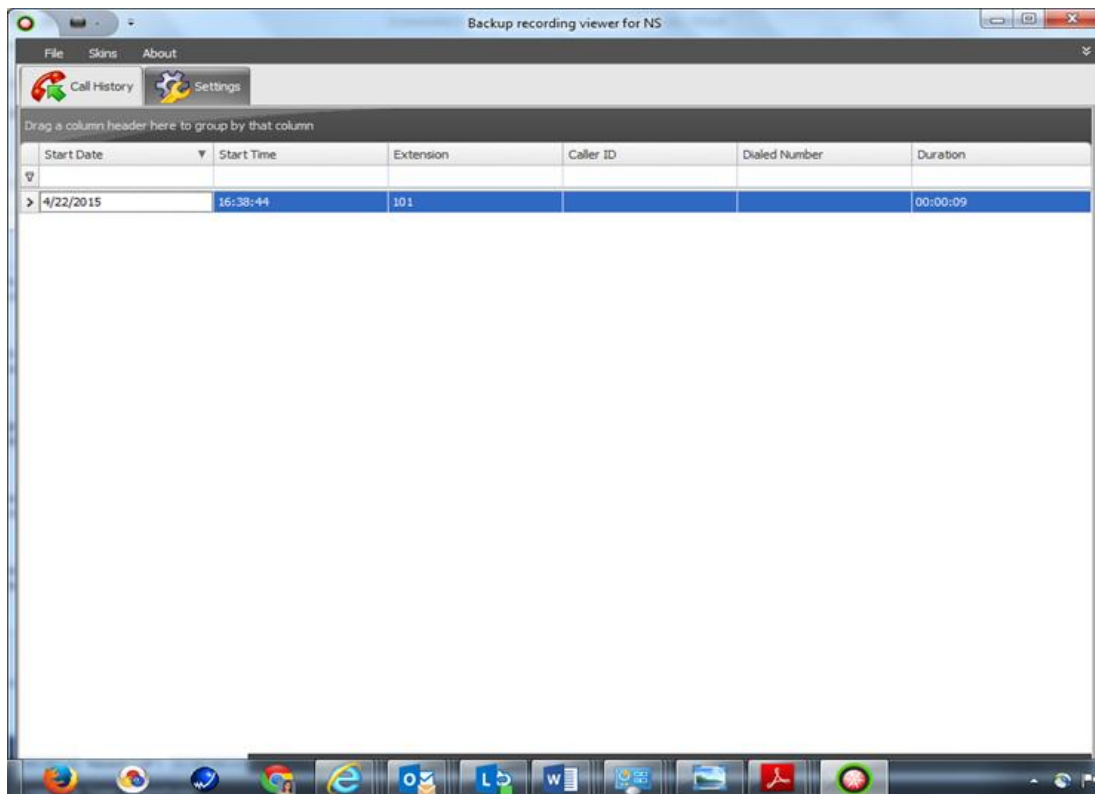


RESELLER BULLETIN

Panasonic
AUTHORIZED
RESELLER PROGRAM

You can listen to these messages using the free Poltys Backup recording viewer. (It will play in default media player)

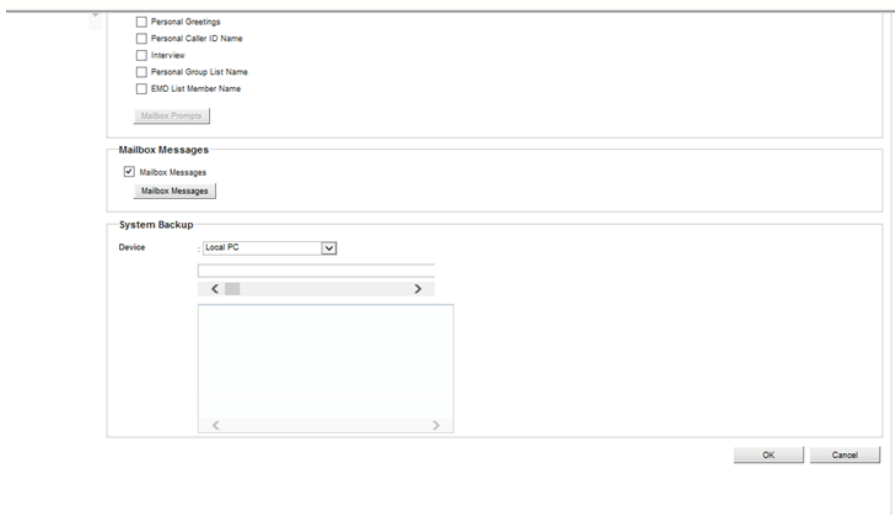
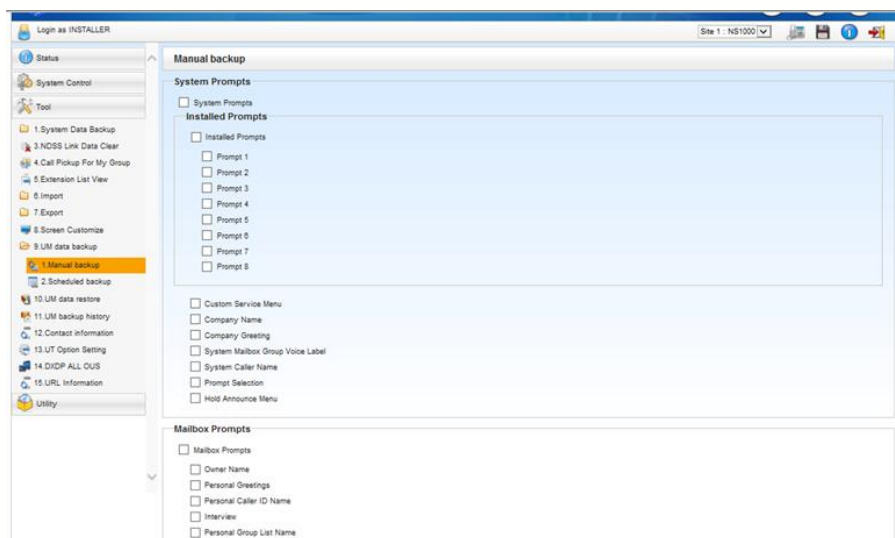
http://www.poltys.com/en/panasonic/backup_recording_viewer_for_ns.html



Manual Backup to NAS –

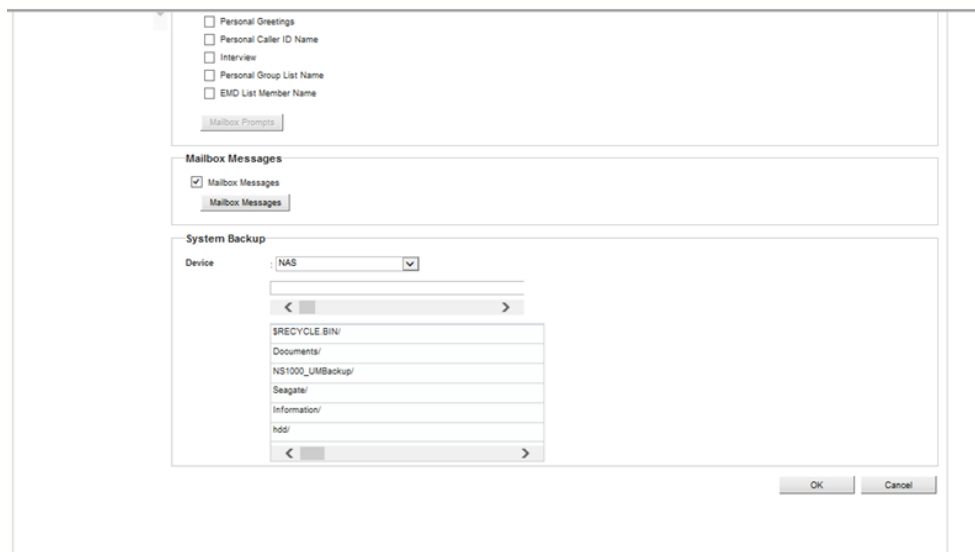
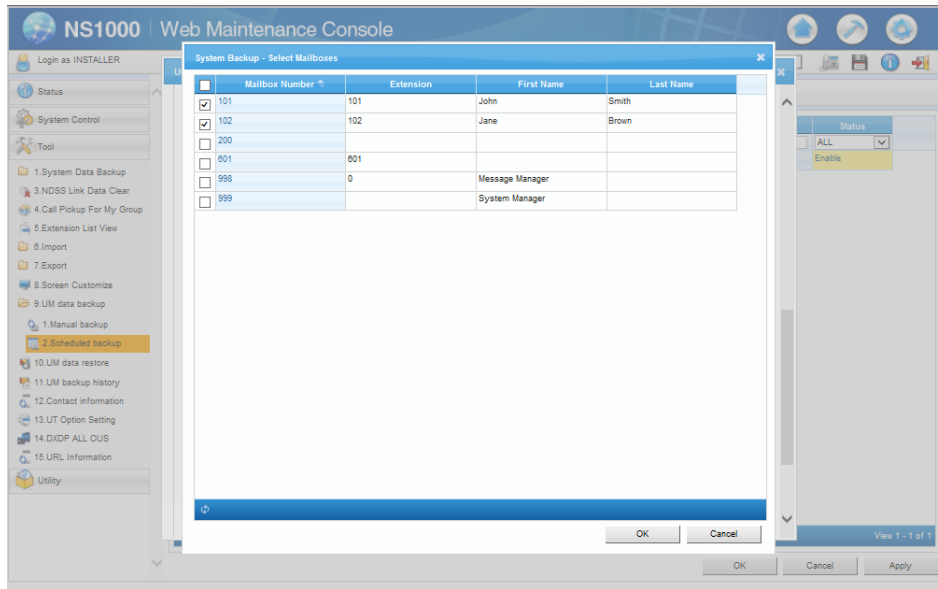
Set up NAS per Steps 1 and 2 above in scheduled backup.

Step 4. Make following selections under the UM manual backup (9.1). The instructions are similar to instructions for scheduled backup.



RESELLER BULLETIN

Panasonic
AUTHORIZED
RESELLER PROGRAM



RESELLER BULLETIN

Panasonic
AUTHORIZED
RESELLER PROGRAM

☐ Personal Greetings
☐ Personal Caller ID Name
☐ Interview
☐ Personal Group List Name
☐ EMD List Member Name

Mailbox Prompts

Mailbox Messages

☒ Mailbox Messages

Mailbox Messages

System Backup

Device : NAS

< >

\$RECYCLE.BIN/
Documents/
NS1000_UMBackup/
Seagate/
Information/
hdd/

< >

OK Cancel

☐ Personal Greetings
☐ Personal Caller ID Name
☐ Interview
☐ Personal Group List Name
☐ EMD List Member Name

Mailbox Prompts

Mailbox Messages

☒ Mailbox Messages

Mailbox Messages

System Backup

Device : NAS

NS1000_UMBackup/

< >

[Back]
MailboxMessages_101_20150422154200.bkp

< >

OK Cancel

